

WICKON

HIGHTECH

SPEEDFilm 2D AOI



2D Automated Optical Inspection system with a combination of Top and Bottom light switching.

The features of SPEEDFilm is to make a system, which is predominantly suitable for performing inspections of foil print processes

Of course, an individually adapted system structure, shall be created to perfectly correspond required specifications.

SPEED

Up to **700 cm²/s**

Optical Resolution

Up to **1,50 μm**

Repeatability ± 1,5 μm @ 6 Sigma

CHARACTERISTIC

- High speed – up to 700 cm²/s
- Maximum accuracy – up to 1,5 μm
- Repeatability ± 1,5 μm @ 6 Sigma
- Innovative patented light technology
- Inspection of printed layers at each process step available (wet, dry, sintered)
- **NEW:** All-Multilayer-Scan: multi-layer printing inspection in one-step.
- **NEW:** High Speed Option: Extended by additional cameras and lights.

Inspection Performance

resolution	speed
3 μm	30 cm ² /s (2 nd Camera)
7 μm	220 cm ² /s
10 μm	500 cm ² /s
12 μm	700 cm ² /s

SYSTEM MODELS

- \ Inline
- \ Offline
- \ Integration in existing system (e.g. handling system, printer, etc.)
- \ Also available as table-top system with fully automatic handling for small products
- \ LEAN production cell

OPTIONS

- \ Offline programming unit
- \ Good-bad functions
- \ Verification station
- \ Bar code reader
- \ Vacuum Table
- \ Round belt drive or vacuum table
- \ MES system communication
- \ CSV export

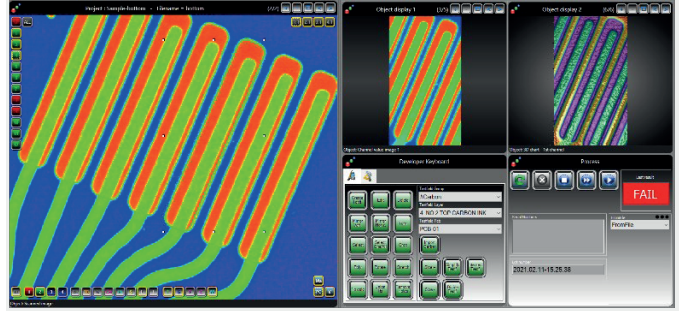
LIGHTENING

- \ **Color top lighting** provides information about the product materials and structure
- \ **2D light** Different wavelength provides information about material differences and mixed materials

Material Inspection

- \ Position of printed material
- \ Excess of printed material
- \ Missing material
- \ Smearred paste
- \ Bridging
- \ Mixed printed materials

Sample Image



BASE SIZE

Length*	70 – 600 mm
Width*	50 – 600 mm
Thickness*	0,6 – 2 mm
Weight*	up to 1 kg

SYSTEM CONFIGURATION

Transport height	950mm // OFFLINE SYSTEM
Transport width	max. 600mm or on request
Interface*	SMEMA
Transfer direction*	Left→Right, Right→Left
Operating side	front
Fixed rail*	Front

*inline systems

INSTALLATION EQUIPMENT

power supply	230 V / 115 V, 50 / 60 Hz, ± 10 %
Electrical network	L1 + N + PE
power input	2.4 kW (peak)
Compressed air connection	6 bar
Air consumption	<12 NI/min

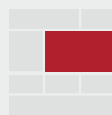
MACHINE DESCRIPTION

	2 segments
L x W x H	800 x 800 x 1800 mm
Netweight	approx. 450 kg
Color	7035 RAL or 9010 RAL
Noise level	< 62 dB



FAST

All sources are being checked – no loss of speed, with all details.



MODULAR

Our modular concept makes it possible to individually combine random options, for example, product resolution, speed and size.



ACCURATE

Our promise of quality: accurate laboratory measurements, now available for your manufacturing process.